

**Trespa Athlon
Color Collection.**

Typically Trespa.

interior colors



ATHLON



All the best qualities in one panel

> Each face is unique <

You want to create an atmosphere for your interior. Trespa Athlon provides a large range of colors to give you that specific look. Whatever the environment requires, Trespa Athlon gives you the solution. Beside this wide variety of looks, Trespa Athlon also has high level characteristics that meet your functional requirements. In each interior environment you can achieve a unique look with Trespa Athlon.

Trespa Athlon.

What is Trespa Athlon?

Trespa Athlon is a flat panel based on thermosetting resins, homogenously reinforced with cellulose fibers and manufactured under high pressure and temperature. Using special techniques, the panels have an integrated, decorative surface with melamine-impregnated paper.

The resultant properties make the product particularly suitable for a wide range of interior applications.

Various environmental considerations played an important role in the development of Trespa Athlon. They range from optimal use of raw materials to an extremely long product lifespan.

What makes Trespa Athlon so unique?

Trespa Athlon has an unrivalled performance. It is extremely scratch and wear resistant and is not adversely affected by moisture. Furnished with a high chemical resistance, this panel material can withstand cleaning even with aggressive disinfectants. These cleaning agents impair neither the properties nor the appearance of the panel.

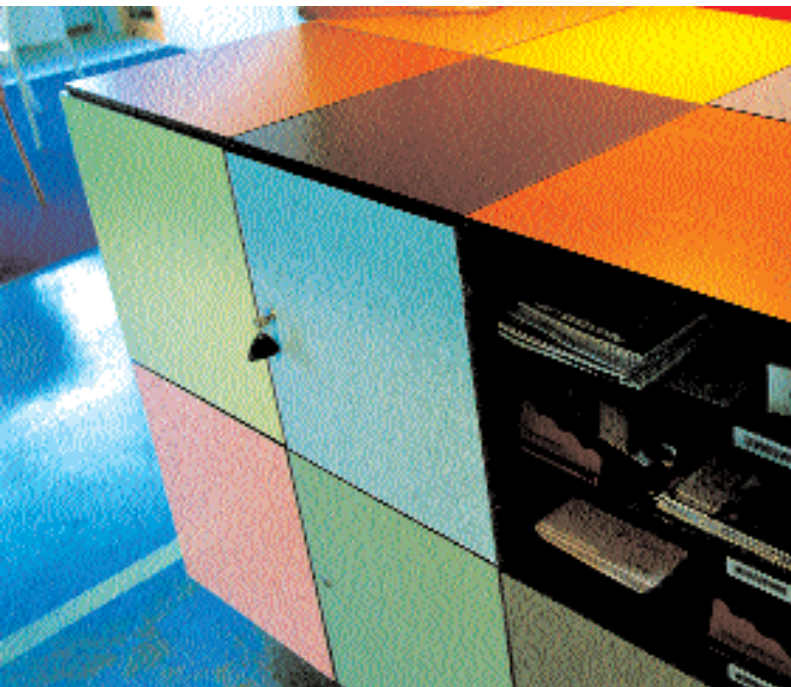
What's more, a favorable combination of flexural strength and elasticity make Trespa Athlon highly impact resistant.

Because the panel surface has a closed structure, dirt doesn't cling, making Trespa Athlon very easy to clean.

The fire behavior of the panel material is excellent. It doesn't melt, drip or explode and retains its stability for a long time.

Trespa Athlon is easy to maintain. Neither the surfaces nor the sawn edges need to be protected.

Standard tungsten carbide tipped tools for hardwood can be used for any kind of processing such as sawing, drilling and routing.





Multi-talented.

Where is Trespa Athlon used?

Trespa Athlon was specially designed for interior applications such as:

- *Wall cladding*, partitions, lockers and cubicles in wet and damp areas. Trespa Athlon's resistance to moisture makes it ideal for use as shower and toilet partitions.
- *Wall cladding in rooms*. Trespa Athlon is unaffected by aggressive cleaning agents and disinfectants. This is vital in areas such as: operating rooms, laboratories and pharmaceutical and food production environments.
- *Changing rooms*. Trespa Athlon is particularly ideal because of its easy-to-clean surface along with its exceptional scratch and impact resistance.
- *Laboratory furniture*. The easy-to-clean low maintenance combined with good chemical resistance make Trespa Athlon ideal for use in a variety of laboratories and pharmaceutical, cosmetic, electronic and food production environments.



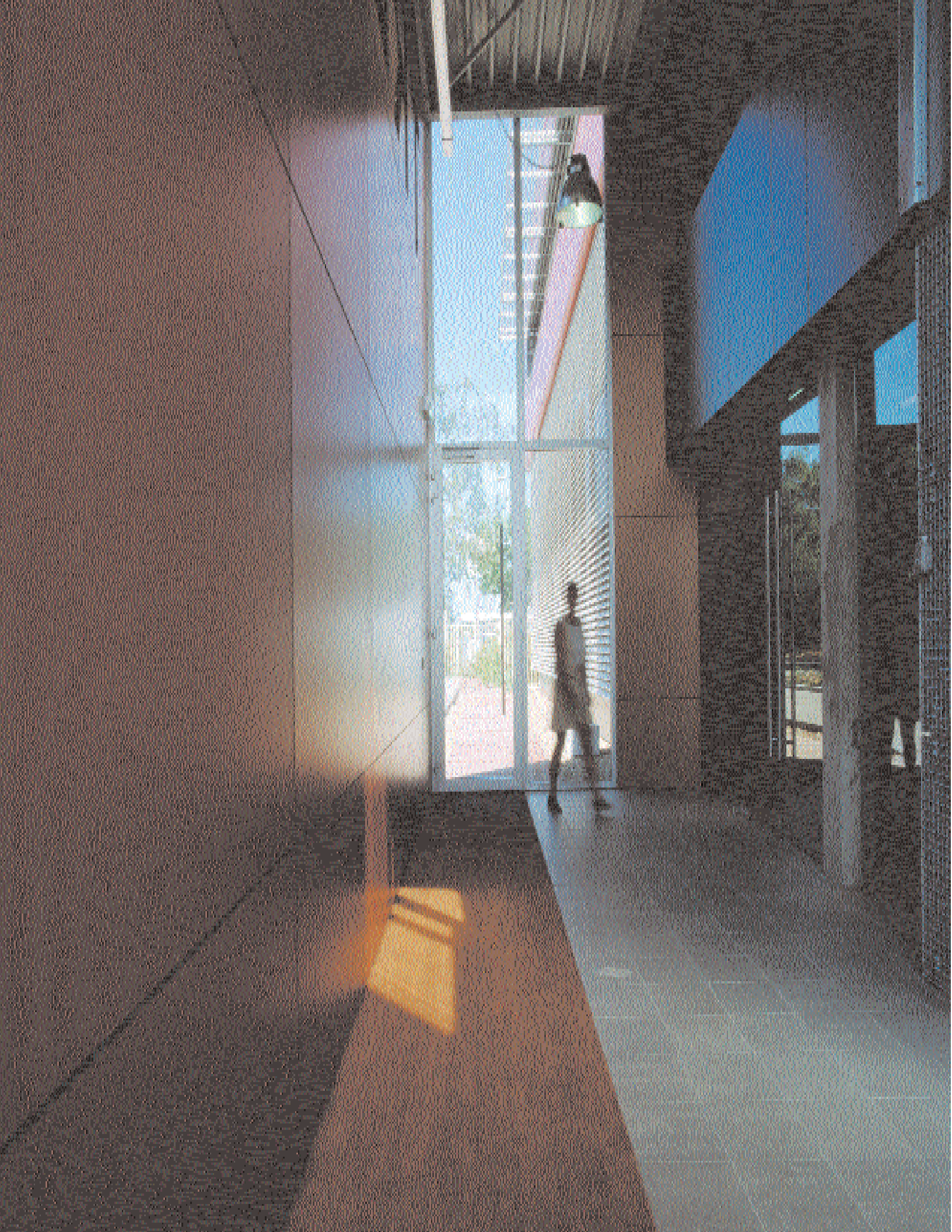
Typically Trespa.

- *Furniture*. Trespa Athlon is highly selfsupporting due to its flexural rigidity. This property in combination with high scratch and wear resistance plus a wide range of colors makes the material ideal for all kinds of furniture and fittings. That's why Trespa Athlon is a clear favorite for applications such as office and educational furniture, reception desks, cabinets, tables, vanity units and the like.



Trespa Athlon is also frequently used for:

- *hand and crash rails in hospital and pharmaceutical corridors*
- *kitchen, food preparation and serving areas*
- *displays or signs*.
- *retail fixtures*



A wide color spectrum.

Trespa Athlon is available in an extended gamma of plain colors and patterns. The plain colors range from warm **(NATURE)** to industrial tones **(CONSTRUCTION)**, and from bright **(FLASH)** to more soft **(FRESCO)** and cool **(POLAR)** colors. Beside this range of plain colors there is also a wide variety of patterns available, from wood and speckled decors to characteristic fantasy prints.

Developed in close co-operation with leading color consultants, this collection is in tune with current aesthetic standards and developments in interior design.

As a unique feature, Trespa Athlon is available with a quality decorative surface on both sides.

The surface structures of Trespa Athlon

Trespa Athlon is available in two different surface structures: quartz and crystal matt. Quartz is a surface structure with a fluid, irregular texture. Crystal matt is a very fine structure with a matt sheen. Both types of surface are completely closed and non-porous.

Because of its surface structure, Quartz is ideal for vertical applications such as wall cladding. The crystal matt surface structure is extremely smooth and wear resistant, making it ideal for horizontal uses such as desk tops. What's more, this surface type is easy to decontaminate, making it suitable for laboratory worktops and furnishing.

Optimal panel sizes reduce cutting waste

Typically Trespa.

The three standard sizes of Trespa Athlon are well adapted to practical requirements so that cutting waste is kept to a minimum. Combined with the six standard thicknesses, they offer economical optimization for any project requirement.

Standard sheet sizes:

120" x 60" (3050 x 1530 mm)

100" x 73" (2550 x 1860 mm)

146" x 73" (3730 x 1860 mm)

Standard thicknesses*:

1/4", 5/16", 3/8", 1/2", 5/8", 3/4", and

1" (6, 8, 10, 13, 16, 20 and 25 mm)

**not all combinations are standard*

Trespa also offers Athlon corner profiles for the perfect fit with Trespa Athlon flat panels (with the same color and surface structure). They are available with double-sided color and Quartz structure.

Standard corner profile sizes:

73" x 12" x 12", radius 3/4"

(1860 x 300 x 300, radius 20 mm)

120" x 12" x 12", radius 3/4"

(3050 x 300 x 300, radius 20 mm)

Standard corner profile thicknesses:

5/16", 3/8" and 1/2" (8, 10 and 13 mm)





Excellent properties.

Ideal for intensive use As an extremely versatile material, with excellent properties, Trespa Athlon is ideal for use in all public and recreational buildings and for furniture subject to intensive use.

Resistant to wear Trespa Athlon is highly resistant to wear, making it ideal for installation where heavy use and frequent cleaning are expected and required.

Scratch resistant The special surface structure and durability of Trespa Athlon provides excellent scratch resistance. Even in heavy-duty use, the panel retains its appearance over time.

Simple to clean The closed, non-porous surface of Trespa Athlon does not attract dirt.

This means that the panel can easily be cleaned either with normal cleaning agents or even with strong disinfectants, because the material is chemically resistant. It's also easy to clean graffiti, for which an organic solvent should be used - there's no danger of affecting the color.

Good chemical resistance Trespa Athlon has a high resistance to organic solvents such as acetone, toluene, xylene and similar substances. The panel is also resistant to disinfectants and cleaning chemicals as well as food juices and dyes, which affect neither the properties nor the appearance. However, where concentrated, strong acids are frequently used we recommend the extremely chemical resistant Trespa TopLab^{plus}.

Typically Trespa.

Resistant to moisture Trespa Athlon is not adversely affected by moisture and is not susceptible to mold or rot. Both the surface and the core are manufactured using specific, thermosetting resins, which make them impervious to moisture.

Impact resistant The combination of a solid, homogenous core with a hard surface based on melamine resins gives the panel exceptional impact resistance.

This is confirmed by the result of the dynamic ball-indentation test and of course by its day-to-day practical use e.g. as wall cladding in public rooms and rooms susceptible to vandalism, or as bumper rails in hospital corridors.

Heat resistant A Trespa Athlon benchtop will retain all its characteristics in temperatures ranging from -40° to 266°F.



Safe fire behavior

Trespa Athlon is available in standard grade and fire rated (FR) grade. The material does not ignite and flake off. The fire behavior of both grades of Trespa Athlon is comparable to that of hardwood. The panel material does not melt, drip or explode and retains its stability over time.

Trespa is self-extinguishing and UL classified and labeled in accordance with ASTM E-84. *(See results page 12).*

Suitable for applications in the food industry

Trespa Athlon conforms with the requirements of the FDA (Food and Drug Administration) for direct contact with foods.

Anti-static

Trespa Athlon is designated as an anti-static material - in accordance with DIN 51 953 and DIN 53 482. This makes the panel particularly suitable for applications in clean rooms, as computer furniture or in the optical industry.

Radiation

Trespa Athlon can be penetrated by X-rays, so it is often used in the medical treatment sector.

Trespa and the environment

Early on we recognized the importance of an independent life-cycle analysis. Today Trespa can clearly show the ecological impact of its products from the raw materials and the production process to the application and recycling.

Trespa Athlon has a total recycled content of 15% post-industrial waste. Approximately 70% of the materials used to manufacture Athlon are derived from renewable resources.

For thermo-recycling it can be burned in industrial furnaces (at a temperature of > 1328 °F). No hazardous, corrosive gases are released. This is also a good method of recovering energy.

Trespa North America is a proud member of the United States Green Building Council and one of the only manufacturers in the HPL industry to participate in BEES, LCA listing.

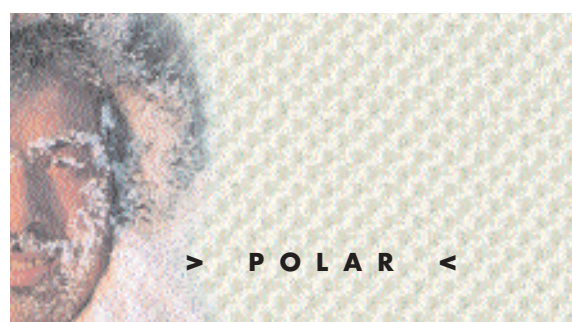
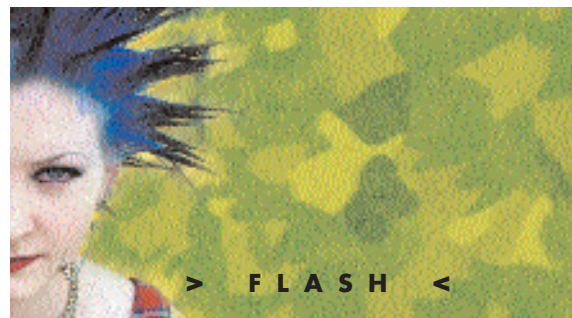
Trespa supplies solutions.

Trespa services

Further information on preparing, processing and assembling Trespa panels is available on request. Color cards, samples and completed project references are also available.


Our representatives will be pleased to offer advice on technical questions, fixing techniques, panel thicknesses, sizes and colors.

Typically Trespa.



Photography:
Philippe Munda for View on Colour magazine

Trespa Athlon color and decor program

									
W 71-03 Silver Maple	W 80-01 Lime	W 74-02 Solid Oak	W 88-02 Eur. Wild Apple	W 73-01 Beech	W 85-02 Pear	W 78-01 Wild Cherry	W 74-01 Oak	W 82-03 Verona Walnut	W 76-01 Highland Pine
									
TT-1 Tatami Flax	E 3-11 Light Ivory	E 1-01 Ivory	CL-1 Calico	E 2-10 Paper White	E 2-11 Stone Beige	E 2-12 Mid Beige	E 3-01 Sand	S 3-01 Sand	
									
E 25-013 Ash Gray	E 25-02 Opal Gray	E 25-03 Zinc Gray	E 0-09 Black	C 0-09 Black	PI-1 Grit Gray	MC-1 Micro Gray	MC-2 Micro Black	PI-2 Grit Blue Gray	E 25-04 Steel Blue
									
E 16-16 Marine Blue	E 18-45 Prussian Blue	PA-1 Patina Green	E 6-53 Orange Lead	PA-2 Patina Rusty Red	PI-3 Grit Wine Red	PI-4 Grit Purple Red	TT-2 Tatami Gray	E 0-04 Mid Gray	S 0-04 Mid Gray
									
E 0-02 Silver Gray	S 0-02 Silver Gray	E 0-015 Pastel Gray	S 0-015 Pastel Gray						
									
E 7-62 Poppy Red	E 15-54 Ultra Marine	E 17-52 Aqua Blue	E 23-53 Grass Green	CB-1 Cyber Green	CB-2 Cyber Orange	CB-3 Cyber Blue	E 17-33 Brilliant Blue	E 22-53 Emerald Green	E 3-42 Gold Yellow
									
E 7-52 Carmine Red									
									
PA-3 Patina Orange Red	E 5-11 Soft Pink	PA-4 Patina Golden	E 2-31 Melon Yellow	S 2-31 Melon Yellow	E 1-215 Pampus Yellow	E 23-21 Pastel Green	E 17-30 Heaven Blue	S 17-30 Heaven Blue	E 17-32 Powder Blue
									
S 17-32 Powder Blue	E 20-12 Aquamarin	S 20-12 Aquamarin							
									
PA-5 Patina Turquoise	PA-6 Patina Light Blue	E 19-11 Light Blue	S 19-11 Light Blue	E 0-00 White	S 0-00 White	MC-3 Micro White	E 2-01 Pearl White	E 13-00 Cristal Pink	E 25-01 Icy Blue

These colors are printed to provide as accurate a representation of the color collection as possible. However they may vary slightly from the original Trespa panel colors. Color fans and product samples are available on request.

Material properties Trespa Athlon			
Properties	Value	Unit	Standard
Physical properties			
Specific gravity	± 87.5	lb./ft ³	ASTM-D 792-91
Weight	Thickness 1/4"	8.5	kg/m ²
	Thickness 1/2"	18.5	kg/m ²
	Thickness 5/8"	22.5	kg/m ²
	Thickness 3/4"	28.0	kg/m ²
	Thickness 1"	35.0	kg/m ²
Panel tolerance			
Length & Width	- 0.0/+5	mm	
	Thickness	± 0.5 for 6,8,10 ± 0.6 for 13,16 ± 0.7 for 20 ± 0.8 for 25	mm
Optical properties			
Changes when subjected to dry heat (maximum temperature of 356°F)			EN 438
gloss	5 (= no changes)		
color	5 (= no changes)		
cracking	5 (= no changes)		
Mechanical properties			
Modulus of elasticity	≥ 1.3 x 10 ⁶	psi	ISO 178
Tensile strength	≥ 8,700	psi	ISO 527-3
Flexural strength	≥ 13,000	psi	ISO 178
Surface impact resistance			
All plain colors	4	Index number	EN 438
Scratch resistance			
Plain colors, light	4	Index number	EN 438
Plain colors, dark	3	Index number	EN 438
Wear resistance			
All plain colors	3	Index number	EN 438
Fantasy decors	2	Index number	EN 438
Water absorption	≤ 1.0	% weight	EN 438
Dimensional stability	< 0.03 (-4 - +176 °F, RH < 85%)	in/ft	---
Thermal properties			
Application temperature			
- constant	-40 to 266	°F	
Chemical properties			
See datasheet chemical properties			
Fire behavior			
	UL Classified		ASTM E-84
Grade	Panel Thickness	Flamespread	Smoke development
FR	1/4" to 1"	10	45-75
Standard	1/4" to 3/8"	50	300
	1/2"	30	85
	5/8" to 1"	25	70

Delivery program Trespa Athlon	
Colors / decorative effects:	
Nature ¹	S
Construction	S
Flash	S
Fresco	S
Polar	S
Type:	
Colored on both sides	S
Surface structure²:	
Q = Quartz	S
C = Crystal Matt	S
Qualities:	
Standard	S
Fire Retardant (FR)	S
Panel sizes (in mm):	
120" x 60" (3050 x 1530 mm)	S
100" x 73" (2550 x 1860 mm)	S
146" x 73" (3730 x 1860 mm)	S
Sizes corner profiles (in mm):	
120" x 12" x 12", radius 3/4" (3050 x 300 x 300, radius 20 mm)	S
73" x 12" x 12", radius 3/4" (1860 x 300 x 300, radius 20 mm)	S
Panel thicknesses (in mm):	
1/4" (6 mm)	S S
5/16" (8 mm)	S
3/8" (10 mm)	S
1/2" (13 mm)	S S
5/8" (16 mm)	S
3/4" (19/20 mm)	S S
1" (25 mm)	S
Corner profile thicknesses (in mm)*:	
5/16" (8 mm)	S
3/8" (10 mm)	S
1/2" (13 mm)	S
S = Standard delivery	

Non-standard sizes, thicknesses and colors available on request. Delivery times depend on color choice.

¹ The wood grain direction follows the length of the panel.

² Q = Quartz is a surface structure with a fluid irregular texture, recommended for vertical applications.
C = Crystal Matt is a very fine surface structure with a matt sheen, recommended for horizontal applications.

* Corner profile only available with colors on both sides, with Quartz structure.

Delivery program Trespa Athlon

Panel size: (146" x 73" on request minimum quantities)

Surface structure:

Panel thicknesses:

Qualities:

120" x 60"

120" x 60"

100" x 73"

100" x 73"

146" x 73"

DSQ*

DSC**

DSQ

DSC

DSQ

1/4"-1/2"-3/4"

1/4"-1/2"-5/8"-3/4"-1"

1/4"-1/2"-3/4"

1/4"-1/2"-5/8"-3/4"-1"

1/4"-1/2"-3/4"

Standard & FR

Standard & FR

Standard & FR

Standard & FR

Standard & FR

		Plain color	Fantasy	Speckle	Craquelé	Wood						
Color group:	Color Names	Code:	Code:	Code:	Code:	Code:						
NATURE	<i>Ivory</i>	E 1-01	Δ				S	S	S	S	1)	
	<i>Paper White</i>	E 2-10					S	S	S	S	1)	
	<i>Stone Beige</i>	E 2-11	Δ				S	S	S	S	S	
	<i>Mid Beige</i>	E 2-12	Δ				S	S	S	S	1)	
	<i>Sand</i>	E 3-01	Δ		S 3-01		S	S	S	S	S	
	<i>Light Ivory</i>	E 3-11	Δ				S	S	S	S	1)	
	<i>Calico</i>			CL 1			S	S	S	S	-	
	<i>Tatami Flax</i>			TT 1			S	S	S	S	-	
	<i>Silver Maple</i>					W 71-03	S	S	S	S	1)	
	<i>Beech</i>					W 73-01	S	S	S	S	1)	
	<i>Oak</i>					W 74-01	S	S	S	S	1)	
	<i>Solid Oak</i>					W 74-02	S	S	S	S	1)	
	<i>Highland Pine</i>					W 76-01	S	S	S	S	1)	
	<i>Wild Cherry</i>					W 78-01	S	S	S	S	1)	
	<i>Lime</i>					W 80-01	S	S	S	S	S	
	<i>Verona Walnut</i>					W 82-03	S	S	S	S	1)	
	<i>Pear</i>					W 85-02	S	S	S	S	S	
	<i>Europ. Wild Apple</i>					W 88-02	S	S	S	S	1)	
	CONSTRUCTION	<i>Pastel Gray</i>	E0-015	Δ	S 0-015			S	S	S	S	S
		<i>Silver Gray</i>	E 0-02	Δ	S 0-02			S	S	S	S	S
<i>Mid Gray</i>		E 0-04	Δ	S 0-04			S	S	S	S	S	
<i>Black</i>		E 0-09			C 0-09		S	S	S	S	1)	
<i>Orange Lead</i>		E 6-53					S	S	S	S	1)	
<i>Marine Blue</i>		E 16-16					S	S	S	S	1)	
<i>Prussian Blue</i>		E 18-45					S	S	S	S	1)	
<i>Opal Gray</i>		E 25-02					S	S	S	S	1)	
<i>Zinc Gray</i>		E 25-03					S	S	S	S	1)	
<i>Steel Blue</i>		E 25-04					S	S	S	S	1)	
<i>Ash Gray</i>		E 25-013					S	S	S	S	1)	
<i>Micro Gray</i>				MC 1			S	S	S	S	-	
<i>Micro Black</i>				MC 2			S	S	S	S	-	
<i>Grit Gray</i>				PI 1			S	S	S	S	-	
<i>Grit Blue Gray</i>				PI 2			S	S	S	S	-	
<i>Grit Wine Red</i>				PI 3			S	S	S	S	-	
<i>Grit Purple Red</i>				PI 4			S	S	S	S	-	
<i>Patina Green</i>				PA 1			S	S	S	S	-	
<i>Patina Rusty Red</i>			PA 2			S	S	S	S	-		
<i>Tatami Gray</i>			TT 2			S	S	S	S	-		
FLASH	<i>Gold Yellow</i>	E 3-42					S	S	S	S	S	
	<i>Carmine Red</i>	E 7-52					S	S	S	S	S	
	<i>Poppy Red</i>	E 7-62					S	S	S	S	1)	
	<i>Ultramarine</i>	E 15-54					S	S	S	S	1)	
	<i>Brilliant Blue</i>	E 17-33					S	S	S	S	S	
	<i>Aqua Blue</i>	E 17-52					S	S	S	S	S	
	<i>Emerald Green</i>	E 22-53					S	S	S	S	1)	
	<i>Grass Green</i>	E 23-53					S	S	S	S	1)	
	<i>Cyber Green</i>			CB 1			S	S	S	S	-	
	<i>Cyber Orange</i>			CB 2			S	S	S	S	-	
<i>Cyber Blue</i>			CB 3			S	S	S	S	-		
FRESCO	<i>Pampus Yellow</i>	E 1-215					S	S	S	S	1)	
	<i>Melon Yellow</i>	E 2-31		S 2-31			S	S	S	S	S	
	<i>Soft Pink</i>	E 5-11					S	S	S	S	1)	
	<i>Heaven Blue</i>	E 17-30		S 17-30			S	S	S	S	1)	
	<i>Powder Blue</i>	E 17-32		S 17-32			S	S	S	S	S	
	<i>Aquamarin</i>	E 20-12		S 20-12			S	S	S	S	S	
	<i>Pastel Green</i>	E 23-21					S	S	S	S	1)	
	<i>Patina Orange Red</i>			PA 3			S	S	S	S	-	
<i>Patina Golden</i>			PA 4			S	S	S	S	-		
POLAR	<i>White</i>	E 0-00	Δ	S 0-00			S	S	S	S	S	
	<i>Pearl White</i>	E 2-01	Δ				S	S	S	S	1)	
	<i>Cristal Pink</i>	E 13-00	Δ				S	S	S	S	1)	
	<i>Light Blue</i>	E 19-11		S 19-11			S	S	S	S	1)	
	<i>Icey Blue</i>	E 25-01	Δ				S	S	S	S	1)	
	<i>Micro White</i>			MC 3			S	S	S	S	-	
	<i>Patina Turquoise</i>			PA 5			S	S	S	S	-	
<i>Patina Light Blue</i>			PA 6			S	S	S	S	-		

S = Standard delivery

1) = On request. Different delivery time

Δ = Colors especially recommended for laboratory worktops

*DSQ = Doublesided quartz

**DSC = Doublesided crystal

VISIT OUR NEW WEBSITE
WWW.TRESPA.COM

Quality.

Trespa International BV

Trespa International BV specializes in high quality panel material for façade cladding and interior use. Trespa has both the expertise and the means to develop products for specific segments of the market. Trespa is continually looking for ways to protect the environment even more effectively.

Four perfect product lines

Production of the façade cladding material Trespa Meteoron is based on unique, patented techniques, which guarantee excellent weather resistance and colorfastness. Trespa Athlon, which offers you outstanding moisture resistance along with scratch and wear resistance, is particularly suitable for interior use. Trespa Virtuon is aesthetically pleasing and the perfect product for interior applications where durability, hygiene, cleanability are required. And Trespa TopLab^{PLUS}, highly resistant to chemicals and designed for use as laboratory worktops, completes the product program.

ISO 9001



Trespa guarantees quality of both products and services. We offer our customers optimal technical support as well as straightforward documentation. Proof of this approach is the award of the ISO 9001 certificate.

Whatever your requirements, Trespa offers a full support service. Please contact us for further information.



TRESPA

All the best qualities in one panel

Typically Trespa.

Trespa North America Ltd.

12267 Crosthwaite Circle
Poway, CA 92064
Tel.: (1)-800-4-TRESPA
Fax: (1)-858-679-0440
info@trespanorthamerica.com

Trespa International BV

Postbus 110, 6000 AC Weert
Wetering 20, 6002 SM Weert
The Netherlands

Verkoop Nederland

Tel.: 31 (0) 495 458 850
Fax: 31 (0) 495 540 535
infonederland@trespa.com

Export Department Europe/Middle East Asia/Pacific

Tel.: 31 (0) 495 458 359 / 392 / 578
Fax: 31 (0) 495 458 383
infoexport@trespa.com

Trespa UK Ltd

Grosvenor House
Hollinswood Road
Central Park, Telford
TF2 9TW
Tel.: 44 (0) 1952 290707
Fax: 44 (0) 1952 290101
Info@trespa.co.uk

Trespa Deutschland GmbH

Richmodstraße 6
50667 Köln
Telefon: 0800 - 186 04 22
Telefax: 0800 - 186 07 33
infodeutschland@trespa.com

Trespa Belgium Bvba/Sprl

H. van Veldekesingel 150 B. 19
3500 Hasselt
Tel.: 0800 - 15501
Fax: 0800 - 15503
infobelgium@trespa.com

Trespa France

18 rue Chartran
92200 Neuilly sur Seine
Tel.: 33 (0) 1 41 92 04 80
Fax: 33 (0) 1 41 92 04 89
infofrance@trespa.com

Trespa Japan Ltd.

Toranomon Toyo Building 6F
4-2 Toranomon, 1-chome
Minato-ku, Tokyo 105
Tel.: 81 (0) 3 3500 5080
Fax: 81 (0) 3 3504 0034
webmaster@trespa.co.jp

Trespa China Co. Ltd.

Room 2907
Plaza 66
No. 1266 Nanjing Road (W)
Shanghai 200040 P.R.C.
Tel.: 86 (0) 21 6288 1299
Fax: 86 (0) 21 6288 1296
infochina@trespa.com.cn

Registered trademarks

© Trespa, Meteoron, Athlon, Toplab, Volkern, Virtuon, Ioniq and Inspirations are registered trademarks of Trespa International BV.

Responsibility

All information is based on our current state of knowledge. It is intended as information concerning our products and their application possibilities, and is therefore not intended as any form of guarantee with regard to any specific product characteristic.

Colors

The colors in this document are printed, and therefore, may vary slightly from the original Trespa panel colors with respect to gloss, color shades and surface texture. Original samples are available on request.

Copyrights

© All rights reserved. No part of this publication may be reproduced, stored in a retrieval system, or made public, in any form or by any means, either graphic, electronic or mechanical, including photocopying, recording or otherwise, without the prior written permission of Trespa International BV.

Disclaimer

Values shown are based on testing of laboratory test specimens and represent data that fall within the normal range of properties for typical material.

Any determination of the suitability of the material for any use contemplated by the user and the manner of such use is the sole responsibility of the user, who must assure himself that the material as subsequently fabricated meets the needs of his particular product or use. To the best of our knowledge the information contained in this publication is accurate; however, we do not assume any liability whatsoever for the accuracy or completeness of such information.

We recommend that anyone intending to rely on any recommendations or to use any equipment, fabrication technique, or material mentioned in this publication should satisfy himself that he can meet all the applicable safety and health standards. We strongly recommend that users seek and adhere to the manufacturer's or supplier's current instructions for handling each material they use. Infringement of any patents is the sole responsibility of the user. If this is being transmitted via e-mail or CD-ROM; users should be aware that losses may occur during transmission and that others may have modified it.

www.trespa.com



V212 / 0402

Your Trespa distributor: